

# MSK

---

CONSTRUCTED  
PERCEPTION  
ON OVERLOOKED BEAUTIES

V2.9 - 14 May 2026



ARTWORKS BY MSK  
[www.mehmetsalihkanber.com](http://www.mehmetsalihkanber.com)

2026

# **THE ARTGINEER IN PURSUIT OF UNNOTICED BEAUTY**

A deliberate soul living within the completion of engineering and artistic identities. MSK constructs systems of perception around a single question:

**"As time flows through life, what makes us overlook and which beauties do we miss?"**

## HIS COMPLEDICTION

Mehmet Salih Kanber (MSK) is an artist operating between two fundamentally opposing disciplines: engineering and art. Engineering builds systems, measures reality, and accelerates processes; art perceives, questions, and slows time down.

Rather than resolving this tension, MSK sustains it through what he defines as **Compediction**: a state where contradiction is not eliminated, but deliberately preserved and allowed to let opposing disciplines complete one another.

Through works such as *Stone Portraits*, *Stonograph*, *MSK Stones*, and other experimental systems of perception, MSK investigates overlooked forms of beauty hidden within ordinary materials, forgotten details, and unnoticed moments.

Operating between deep geological time and immediate human experience, his works invite viewers to pause and reconsider what remains unseen within everyday life.

At the center of his practice lies a continuous question:

“As time flows through life, what makes us overlook, and which beauties do we miss?”

## EDUCATION - BACKGROUND

Mehmet Salih Kanber (MSK) holds a degree in Electrical and Electronics Engineering from Middle East Technical University (METU) and a Master’s degree from Akdeniz University.

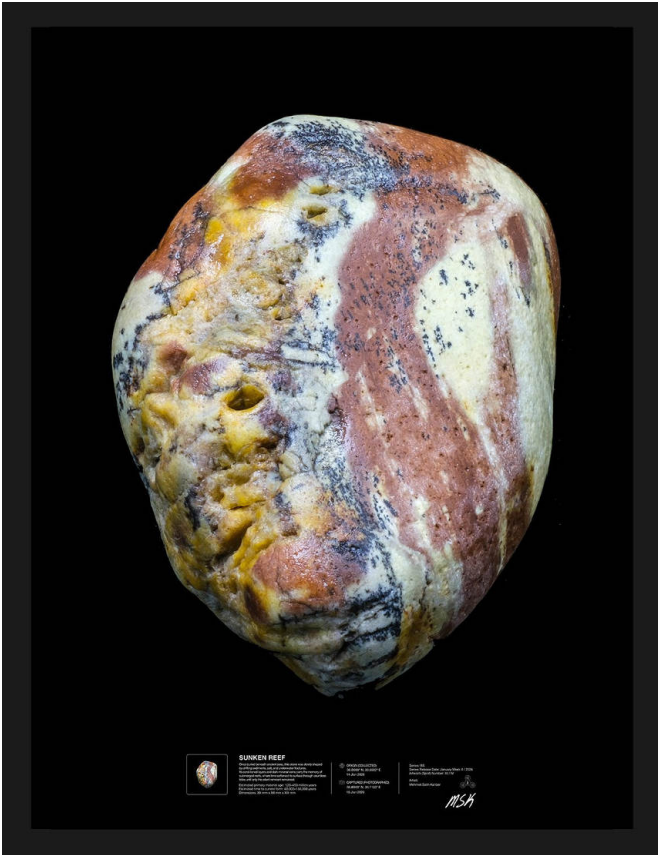
With a background spanning energy systems, automation, and robotics, his practice bridges engineering precision with artistic exploration. His work focuses on revealing hidden structures and visual narratives within natural materials.

Alongside his artistic practice, he develops functional products through 3D printing, exploring the relationship between material, process, and perception.



# STONE PORTRAITS

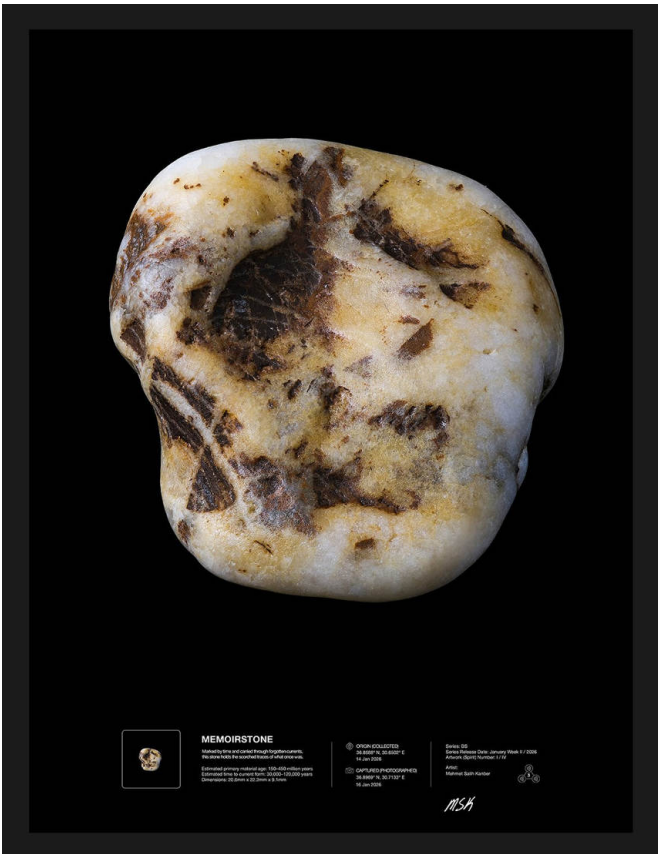
Translating Micro-Lithic Beauty into Macro-Scale Limited Editions



Master Artwork - Embodied in Portrait Form, 70×100 cm



Master Artwork - Embodied in Portrait Form, 50×70 cm



Master Artwork - Embodied in Portrait Form, 30×40 cm



Master Artwork - Embodied in Portrait Form, 30×40 cm



### VEINS OF A LOST MAP

Shaped by pressure and wandering time, this stone carries the fading lines of a forgotten terrain. Its veins trace silent journeys, a fragment of Earth preserving maps no longer seen.

Estimated primary material age: 120–240 million years  
Estimated time to current form: 30,000–80,000 years  
Dimensions: 25.0mm x 31.5mm x 15.9mm

Unique Artpiece Serial No: 006  
2026 )))

Artist: Mehmet Salih Kanber

*MSK*

Master Artwork - Embodied in Portrait Form, 50×70 cm



MSK gathers a limited number of tiny sea stones, each carrying millions of years of memory, and, through the Stonograph's precise light and perspective, infused with his artistic vision, transforms them into *Stone Portraits*.

In this act, he bridges deep time with the present, reinterpreting ancient memory within a contemporary form.

Within these works, viewers encounter their own emotions and hidden memories, sometimes forming an immediate, unspoken connection. *Stone Portraits* invite a quiet pause, asking:

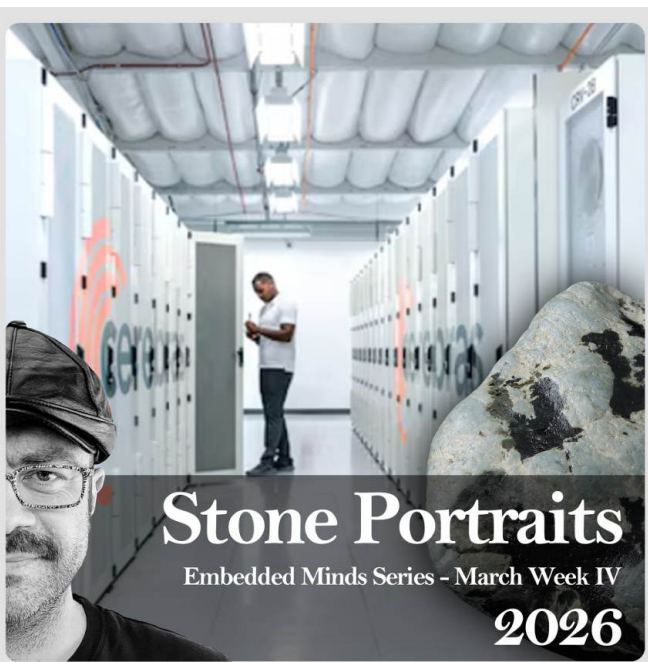
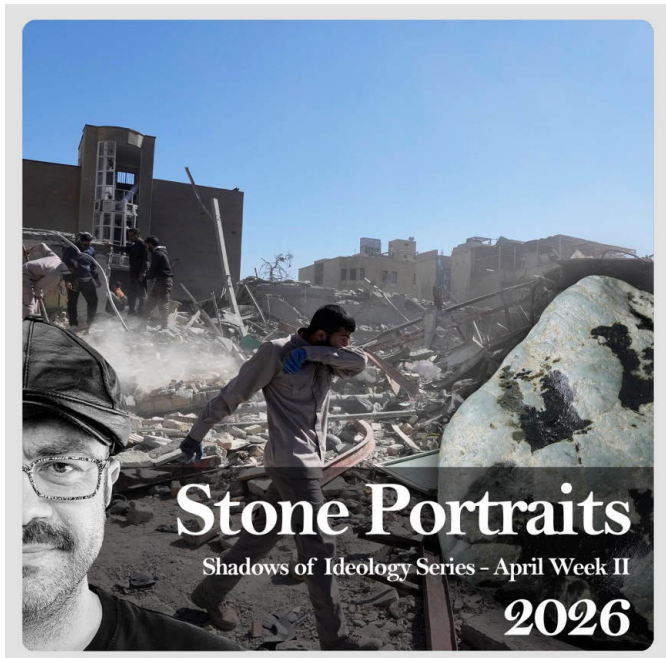
***"What beauties in life are we overlooking?"***



## RELEASE STRUCTURE

Stone Portraits are released in weekly series.

Each series of *Stone Portraits* consists of four stones, named after a significant event of the week in which the series is formed, creating a bridge between deep time and the present.





## THE EMBODIMENT RITUAL

MSK prepares the spirit. The collector completes its embodiment, choosing its mode of appearance, Portrait or Detail, and determining its scale. Through this ritual, the work is not only realized, but completed through the convergence of two roles: the artist and the collector.

From a singular spirit, only **one Master Artwork** and **five Collector Prints** come into existence through museum-grade fine art pigment printing.

**No more can be created.**

The Master Artwork incorporates the original stone itself, preserved on a custom base, singular and irreproducible.

ity  
Mehmet Salih Kanber



m  Custom

21-02-2026  
Date

ained herein

Each piece is embodied only once, in the form and scale chosen by its collector.

**Once embodied, the pieces remain fixed in their form, preserved, certified, and irreproducible.**



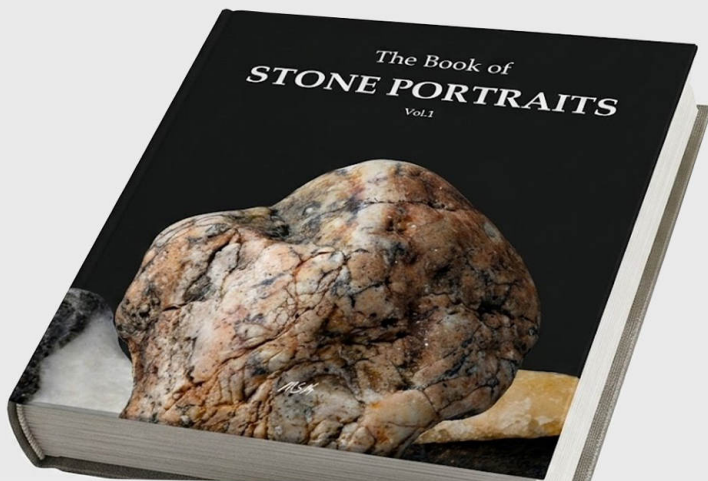
## LITHIC PAREIDOLISM

MSK defines Lithic Pareidolism, revealing hidden faces and shapes within sea stones shaped by millions of years of natural forces.

These interpretations can be explored in *the Book of Stone Portraits* and through the accompanying interpretation videos on his social media.

# The Book of Stone Portraits

A bridge between deep time  
and the present



## THE BOOK OF STONE PORTRAITS

The Book of Stone Portraits brings together the series of stone works alongside the events that give them their names, and the interpretations that emerge from their surfaces. Rather than fixing meaning, the book presents a field of interpretations, where each stone is encountered through the act of seeing.



BEAUTY INSIDE



NORMED

## MSKPERIMENTS

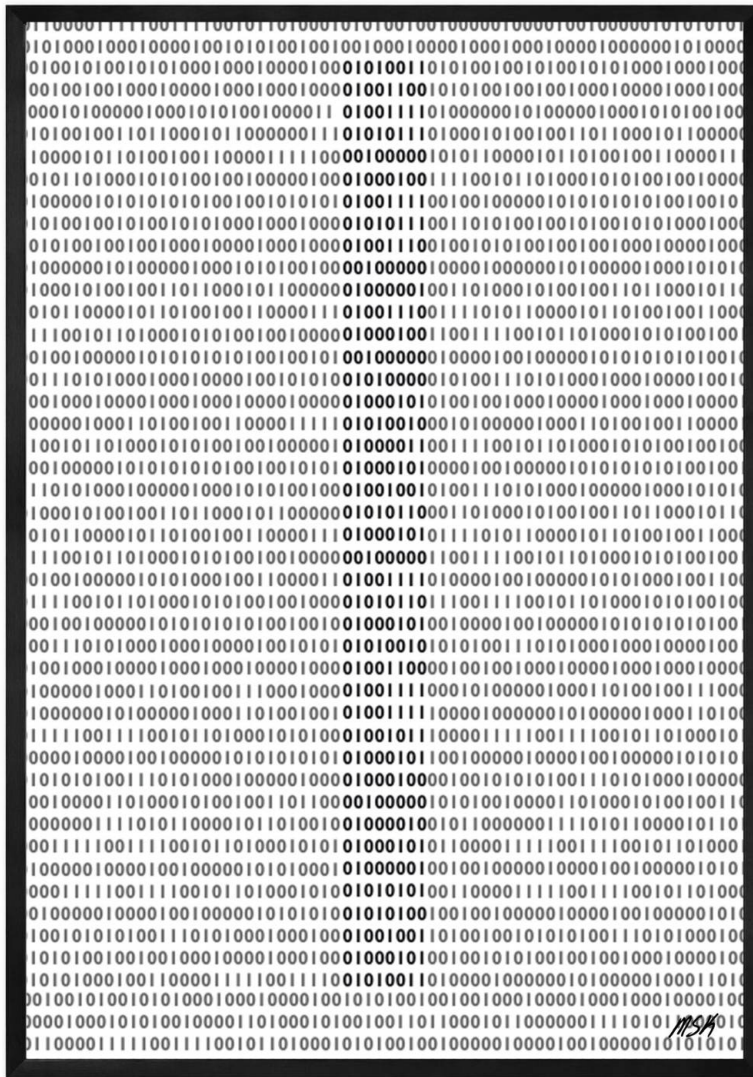
Experimental Artworks to reveal beauty and what stands in the way of seeing it.

These experimental works extend the central question by uncovering hidden and unexpected beauties while simultaneously exposing the mechanisms of overlooking, distraction, haste, routine, and limited attention that shape what we fail to see as time flows through life.

Over time, some of these MSKperiments evolve into fully realized series, becoming ready to be exhibited and to meet collectors.



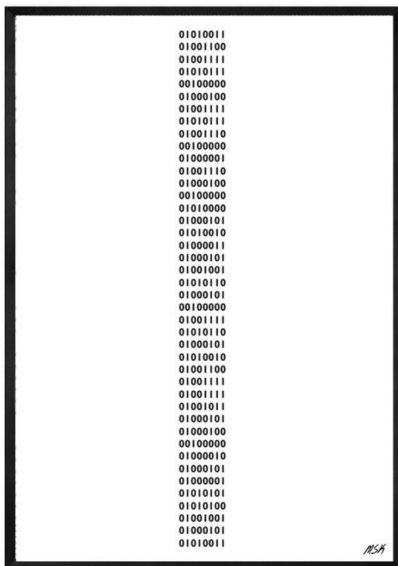
THE STONALYZER



## THE MESSAGE

CODE in CODES

Limited Collector Embodiment of 10 - 70x100cm



## THE MESSAGE

The CODE

Limited Collector Embodiment of 10 - 70x100cm

## THE MESSAGE

As we endlessly move through the codes of life, can we slow down for a moment long enough to notice the one quietly telling us:

“Pause, and perceive beauty”?

The Message series represents an experimental line of inquiry that gradually transformed into a body of works ready to be exhibited and encountered by collectors.

Constructed through binary structures, the works conceal a silent sentence within layers of visual information:

“Slow down and perceive overlooked beauties.”

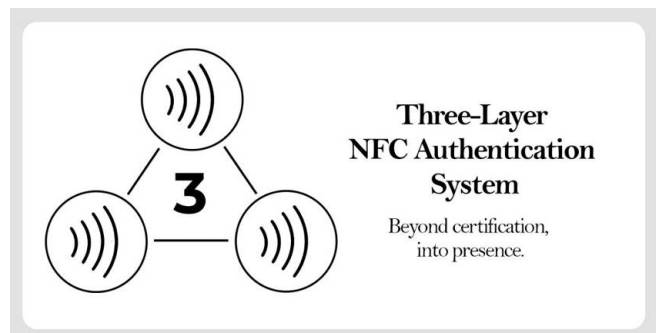


# INVENTED ARTISTIC SYSTEMS

A collection of artistic and technological systems invented by MSK.



A self-developed imaging and perception system designed to reveal hidden visual forms within small sea stones through controlled light, scale, angle, and shadow.



A three-point authentication structure connecting the artwork, the original stone, and the certificate through embedded NFC layers, transforming authentication into part of the artwork itself.



An experimental art-machine imagined as a device capable of reading the memory of stones, questioning whether matter carries traces of time, violence, transformation, and beauty.



## EXHIBITIONS

MSK's works may be encountered independent of place, appearing unexpectedly at a street corner (*MSK Stones*) or at times in global exhibitions (*Stone Portraits*, *Stonalyzer*).

RÖPORTAJ

# Mehmet Salih Kanber

ZAMANIN İÇİNDEKİ YÜZLER VE TAŞA FISILDAYAN BİR ZİHİN...

BAZEN EN BÜYÜK KEŞİFLER, EN KÜÇÜK SEYERİN İÇİNDE SAKLIDIR. MEHMET SALİH KANBER DE BİZE BUNU YALNIZCA ANLATMIYOR, GÖSTERİYOR... MÜHENDİSLİK DİSİPLİNİNİN KESKİN ÇİZGİLERİ İLE SANATIN SEZGİSEL DERİNLİĞİNİ İÇ İÇE GEÇİREK VE GELİŞTİRDİĞİ "STONOGRAPH" SİSTEMİYLE BİR TAŞIN YÜZEYİNDE ZAMANIN SABRINI, BİR DOKUNULU İÇİNDE DÜNYANIN HAFIZASINI HATIRLATIYOR, BİR ÇAKIL TAŞININ İÇİNE BAKIP ORADA MİLYONLARCA YILIN SABRıyla SAKLANMIŞ YÜZLERİ, HİKAYELERİ, KİMLİKLERİ GÖRÜYOR.

BU SAYIMIZDA, MÜHENDİSLİĞİN RASYONEL DÜNYASINDAN SANATSAL SEZGİNİN UÇSUZ BUCAKSIZ EVRENİNE UZANAN BU BENZERSİZ YOLCULUĞUNU, MEHMET SALİH KANBER'İN KENDİ ANLATIMIYLA DİNLIYORUZ...

RÖPORTAJ: BEGÜM TANERİ

## PRESS

Selected interviews, publications, and curatorial features exploring the practice of MSK.



**Stone Portraits by Mehmet Salih Kanber**

**Making the Unnoticed Beauty Visible: MSK's "Stone Portraits" Set**

Mehmet Salih Kanber (MSK), who strives to embody both engineering and art, creates his work within the tension between an engineer's mind that seeks to solve a problem and an artist's soul that aims to slow it down.

Living in Antalya and deeply connected to the city, the engineer-artist creates a series of personal experiences that allowed art to talk back and define his creative path with a simple yet profound question: "As time flows, by which beauties in life are we unable to see?"

Through his work, the artist aims to reveal overlooked aesthetic values found in nature, living structure, and everyday life. His static and kinetic series seek to establish a universal visual language that invites viewers to see the world differently.

The *Stone Portraits* series—considered the artist's "first love"—uncovers the hidden aesthetic world embedded in tiny sea stones found along the Konyaaltı coast, often unnoticed and stepped on. Using a technique, these stones are magnified to reveal nature's ancient traces and transform them into complex, multi-layered compositions reminiscent of abstract paintings, but on a microscopic scale.

Each stone portrait becomes a one-of-a-kind artwork, presented together with the preserved original location where it was collected. The artist produces one primary piece and ten limited edition per artwork. A verification system is used to match the artworks with their certificates of originality, connecting the world and introducing a contemporary dimension to art collecting.

MSK regularly collects the stones used in his work from the shores of Antalya, aiming to share the city's hidden beauty through his creations. The *Stone Portraits* series invites viewers to slow down, observe carefully, and find beauty in the ordinary.

The engineer-artist leaves readers with the same question: "As time flows by, which beauties in life are we unable to see?"

**Contact MSK:**  
 Website: [www.mehmetalihkanber.com](http://www.mehmetalihkanber.com)  
 Email: [connect@mehmetalihkanber.com](mailto:connect@mehmetalihkanber.com)  
 Instagram: [mehmetalihkanber](https://www.instagram.com/mehmetalihkanber)  
 Thank you for your support.

**TURANT - March 2026**

## CONTACT

Available for exhibitions, curatorial collaborations, and collector inquiries.

**Email:** [connect@mehmetsalihkanber.com](mailto:connect@mehmetsalihkanber.com)

**Whatsapp:** [+90 540 515 77 55](https://www.whatsapp.com/message/905405157755)

**Website:** [www.mehmetsalihkanber.com](http://www.mehmetsalihkanber.com)

**Social Media (Instagram):** [@mehmetsalihkanber](https://www.instagram.com/mehmetsalihkanber)

