

# MSK

---

CONSTRUCTED  
PERCEPTION  
ON OVERLOOKED BEAUTIES

V2.14 - 26 May 2026



ARTWORKS BY MSK  
[www.mehmetsalihkanber.com](http://www.mehmetsalihkanber.com)

2026

## **THE QUESTION**

The ability to perceive overlooked beauty within life is among the most essential human capacities. Around this inquiry, he constructs systems of perception and develops series of artistic artworks centered on his question:

**"As time flows through life, what makes us overlook and which beauties do we miss?"**



## MSK: THE LOST STONE

In his youth, while entering the sea burdened by existential anxiety, MSK stepped on a smooth, ancient sea stone. Its unexpected beauty momentarily silenced his troubled mind. He took the stone home as a silent companion.

Years later, after marriage and fatherhood, his life collapsed under rapid personal crises. Left in profound solitude, he was visited in a dream by the same sea stone. It spoke:

"Do not grieve. What is happening is your path. Beauty will return. Hold on to art. If you learn to truly see beauty, everything will heal."

Upon waking, the physical stone had disappeared, MSK couldn't find it anywhere.

This mysterious encounter became a turning point. Falling in love with an artist, MSK began creating in search of meaning. Through emotional turmoil, he gradually understood the stone's true message: beauty was not merely romantic love, but the hidden wonders we overlook in everyday life.

From this realization, his artistic manifesto emerged:

"As time flows through life, what makes us overlook and which beauties do we miss?"

He transformed the memory of the lost stone into a necklace and ring, wearable symbols of his philosophy. The hardships that once broke him became the gateway to his art. Art became his anchor to life.

This deep connection with sea stones awakened in him a sensitivity to their million-year-old memory and compressed energy. He began reading these silent witnesses of time.

This journey gave birth to his *Stone Portraits* series, where he channels the primordial energy and ancient beauty of stones into contemporary art, inviting viewers to pause, see, and reconnect with the overlooked beauty around and within them.

For MSK, the sea stone was never just an object. It was a catalyst, guiding him from personal crisis toward spiritual and artistic wholeness.

## **HIS COMPLEDICTION**

Mehmet Salih Kanber (MSK) is an artist operating between two fundamentally opposing disciplines: engineering and art. One builds systems, measures reality, and accelerates processes; other perceives, questions, and slows time down.

Rather than resolving this tension, MSK sustains it through what he defines as his completion: a state where contradiction is not eliminated, but deliberately preserved and allowed to let his opposing selves complete one another across different moments in time.

## **EDUCATION - BACKGROUND**

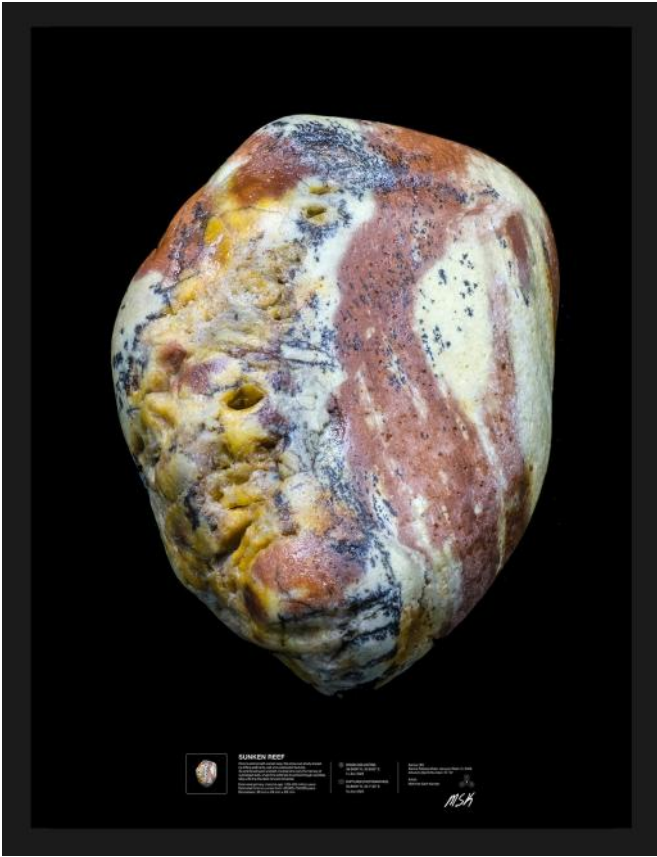
Mehmet Salih Kanber (MSK) holds a degree in Electrical and Electronics Engineering from Middle East Technical University (METU) and a Master's degree from Akdeniz University.

Alongside his artistic practice, he develops functional, and modular products disrupting commercial production and retail chains. With a background spanning energy systems, automation, and robotics, his practice bridges engineering precision with artistic exploration.

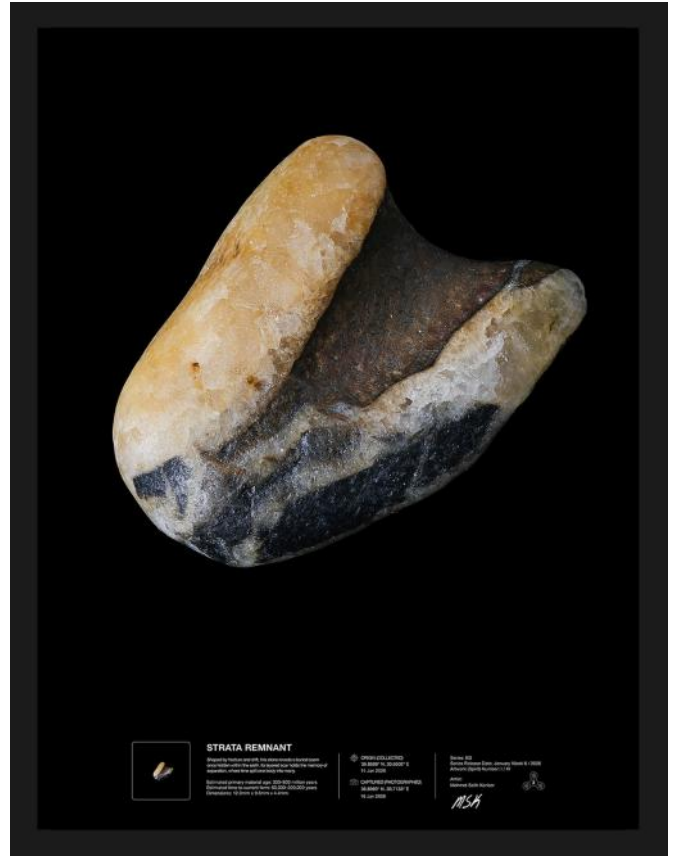


# STONE PORTRAITS SERIES

Translating Micro-Lithic Beauty, memory of millions of years and the energy of Nature into Macro-Scale Limited Artworks



Master Artwork - Embodied in Portrait Form, 70x100 cm



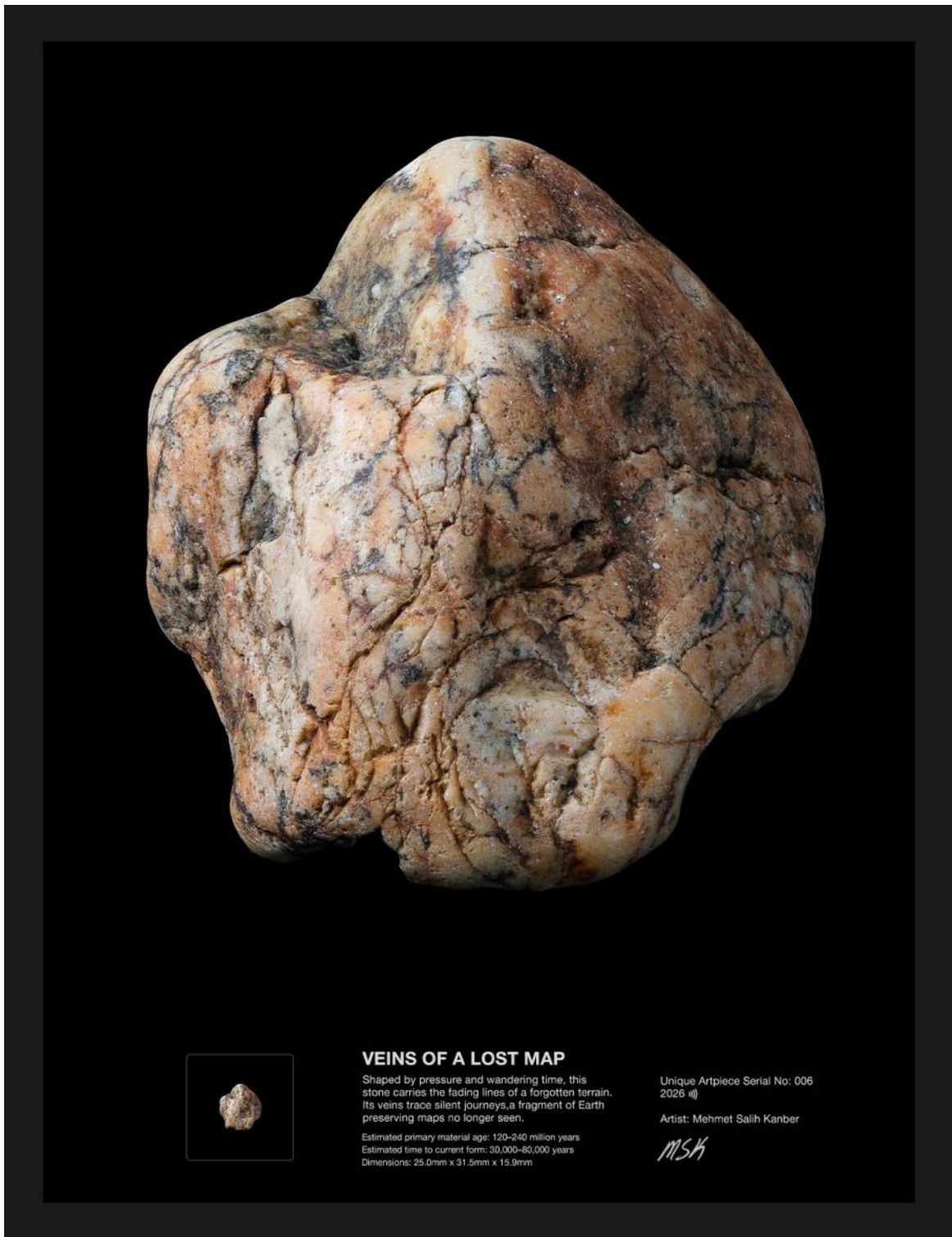
Master Artwork - Embodied in Portrait Form, 50x70 cm



Master Artwork - Embodied in Portrait Form, 30x40 cm



Master Artwork - Embodied in Portrait Form, 30x40 cm



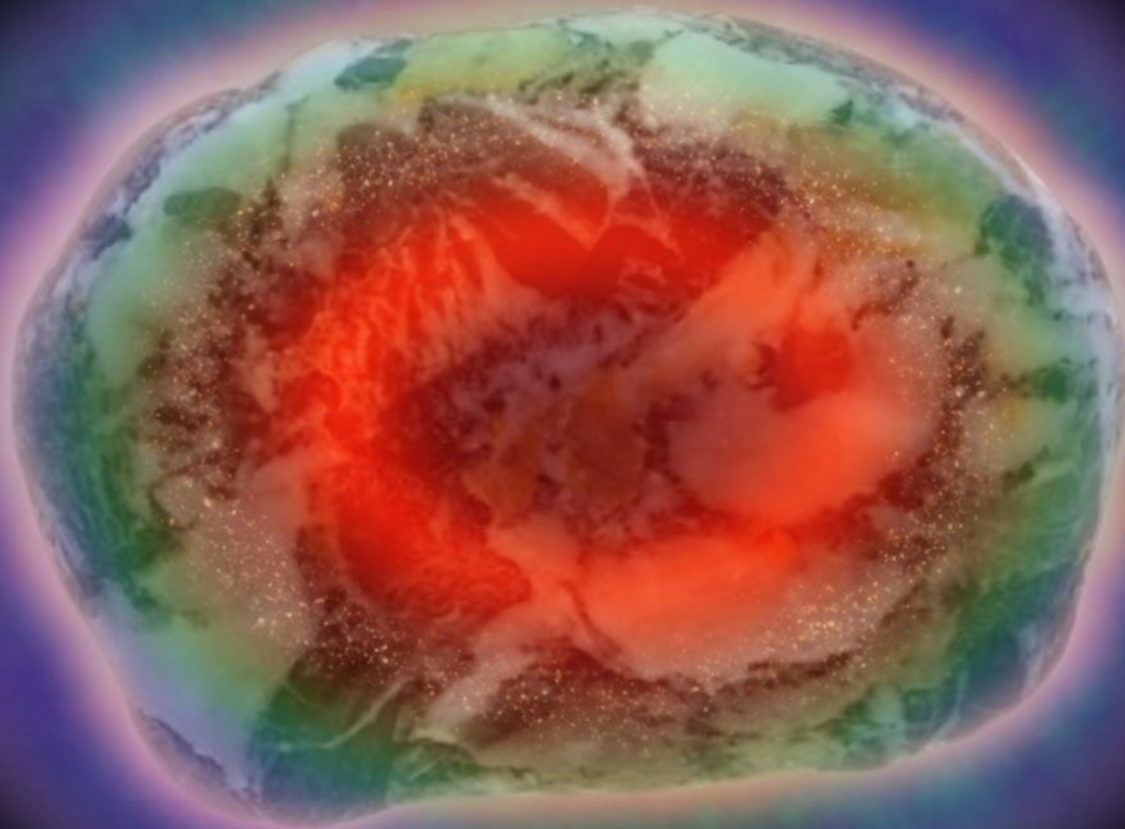
Master Artwork - Embodied in Portrait Form, 50x70 cm

MSK gathers a limited number of tiny sea stones, each carrying millions of years of memory, and through his Stonograph's precise positioning and lighting capabilities, infused with his artistic vision, he transforms those tiny beauties of nature into *Stone Portraits*.

In this act, he bridges deep time with the present, reinterpreting ancient memory within a contemporary form.

Within these works, viewers encounter their own emotions and hidden memories, sometimes forming an immediate, unspoken connection. *Stone Portraits* invite a quiet pause, asking:

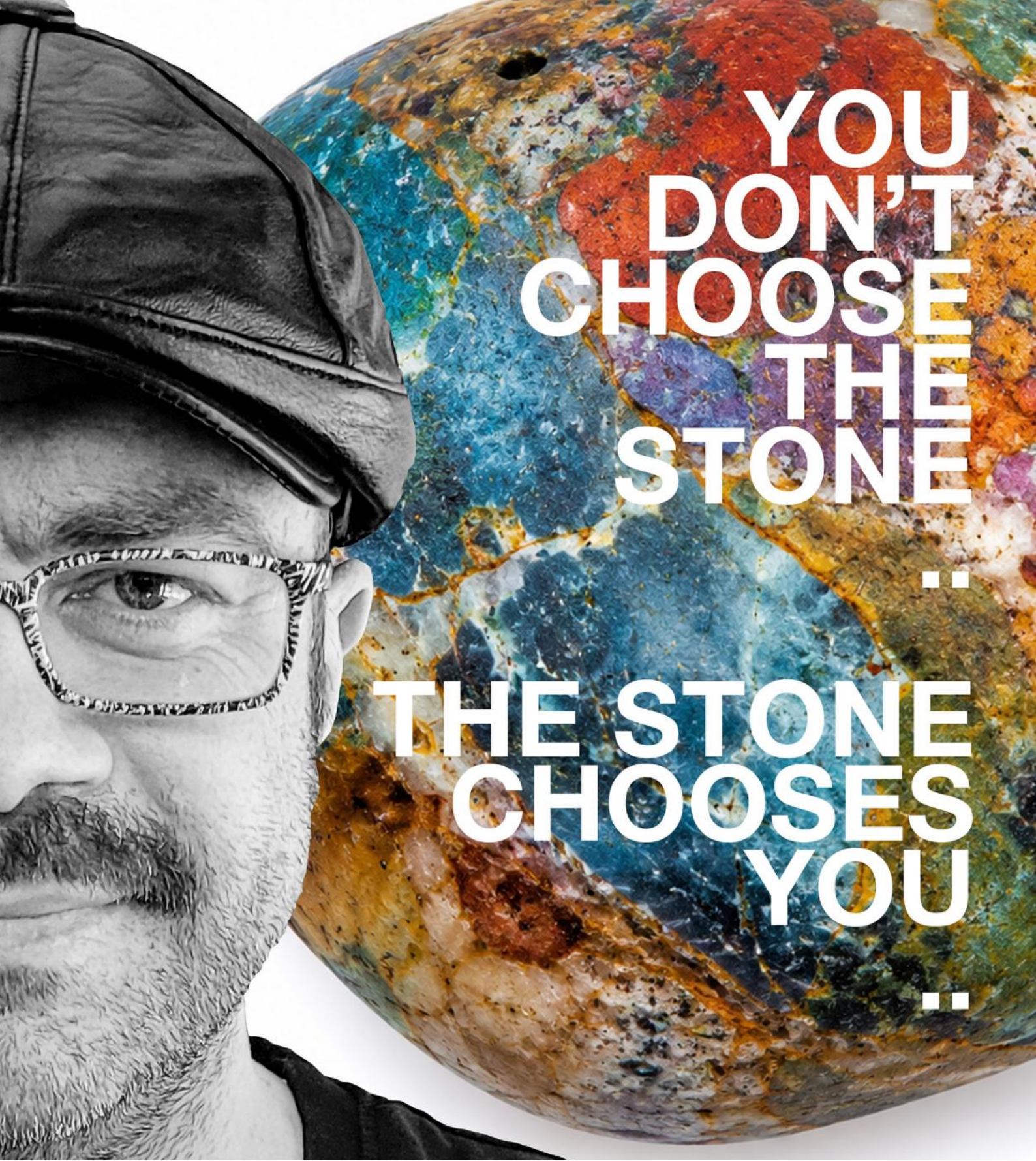
***"What beauties in life are we overlooking?"***



While transforming stones into Stone Portraits, MSK does not only work with their millions of years of memory, textures, and hidden stories..

MSK also connects with their aural energies. These energetic explorations and aura interpretations are presented exclusively during private P.C.A.L exhibitions.

About exclusive events..



YOU  
DON'T  
CHOOSE  
THE  
STONE  
..

THE STONE  
CHOOSES  
YOU  
..

The sea stones that MSK transforms into limited series of artworks under the name Stone Portraits remind us of the overlooked beauty we often fail to notice in life.

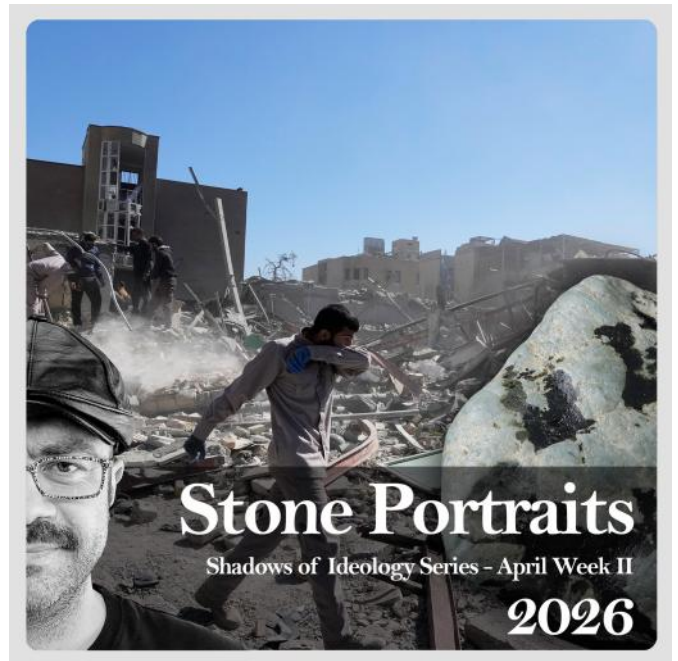
Each Stone Portraits stone possesses its own unique character, energy, and memory, resonating with people who carry a similar energy, character, and memory within themselves.



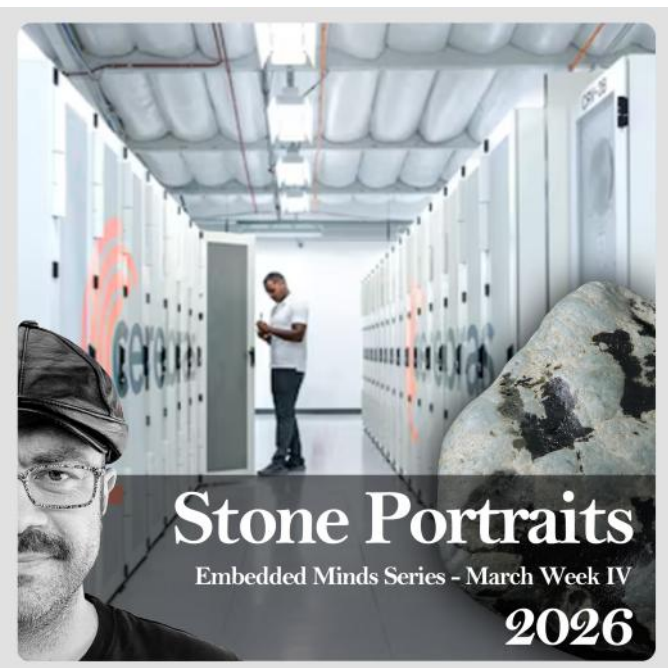
## RELEASE STRUCTURE

Stone Portraits are released in series.

Each series of *Stone Portraits* consists of a limited number of stones, named after a significant event of the week in which the series is formed, creating a bridge between deep time and the present.



Each release creates a bridge between deep time and the present.





## THE EMBODIMENT RITUAL

MSK prepares the spirit. The collector completes its embodiment, determining its scale. Through this ritual, the work is not only realized, but completed through the convergence of two roles: **the artist and the collector**.

From a singular spirit, only **one Master Artwork** comes into existence through **Patented Methodology**, museum-grade fine art pigment printing and with the original stone itself, preserved on a custom base, singular and irreproducible.

**No more can be created.**

ity  
Mehmet Salih Kanber



m  Custom

21-02-2026  
Date

ained herein

Each piece is embodied only once, in the scale chosen by its collector.

**Once embodied, the pieces remain fixed in their form, preserved, certified, and irreproducible.**



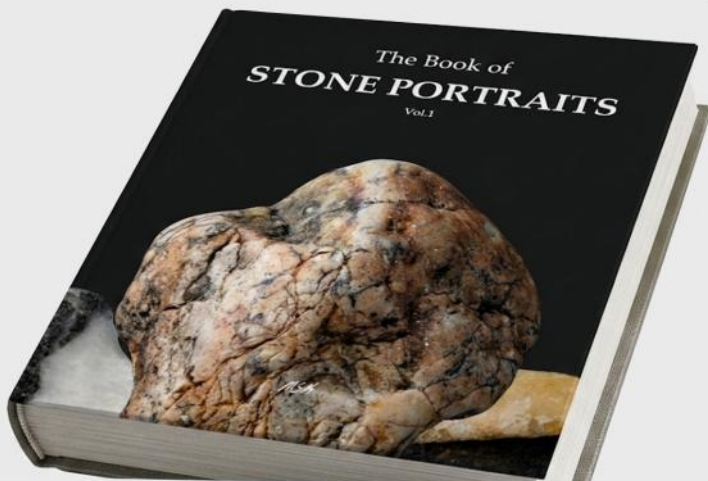
## LITHIC PAREIDOLISM

MSK defines Lithic Pareidolism, revealing hidden faces and shapes within sea stones shaped by millions of years of natural forces.

These interpretations can be explored in *the Book of Stone Portraits* and through the accompanying interpretation videos on his social media.

# The Book of Stone Portraits

A bridge between deep time  
and the present



## THE BOOK OF STONE PORTRAITS

The Book of Stone Portraits brings together the series of stone works alongside the events that give them their names, and the interpretations that emerge from their surfaces. Rather than fixing meaning, the book presents a field of interpretations, where each stone is encountered through the act of seeing.

# MSKPERIMENTS

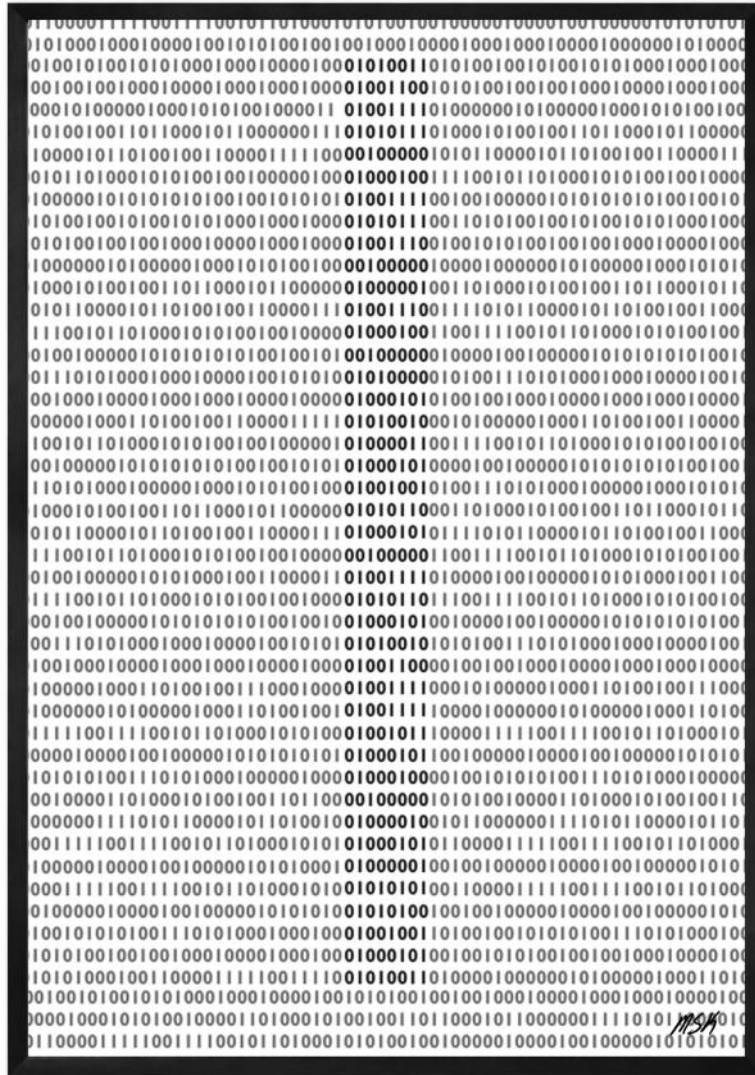
**Experimental Artworks to reveal beauty and what stands in the way of seeing it.**

These experimental works extend the central question by uncovering hidden and unexpected beauties while simultaneously exposing the mechanisms of overlooking, distraction, haste, routine, and limited attention that shape what we fail to see as time flows through life.

Over time, some of these MSKperiments evolve into fully realized series, becoming ready to be exhibited and to meet collectors.



THE STONALYZER



## THE MESSAGE

CODE in CODES

Limited Collector Embodiment of 10 - 70x100cm

## THE MESSAGE SERIES

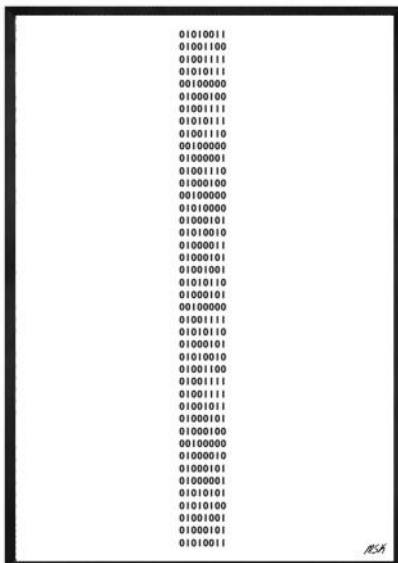
As we endlessly move through the codes of life, can we slow down for a moment long enough to notice the one quietly telling us:

**“Slow down and perceive overlooked beauties.”?**

The Message series represents an experimental line of inquiry that gradually transformed into a body of Works, which will include kinetic structures, ready to be exhibited and encountered by collectors.

For the Works of “The Code” and “Code in Codes” only **five Collector Prints** come into existence through museum-grade fine art pigment printing. **No more can be created.** Each piece is embodied only once, in the form and scale chosen by its collector.

**Once embodied, the pieces remain fixed in their form, preserved, certified, and irreproducible.**



### THE MESSAGE

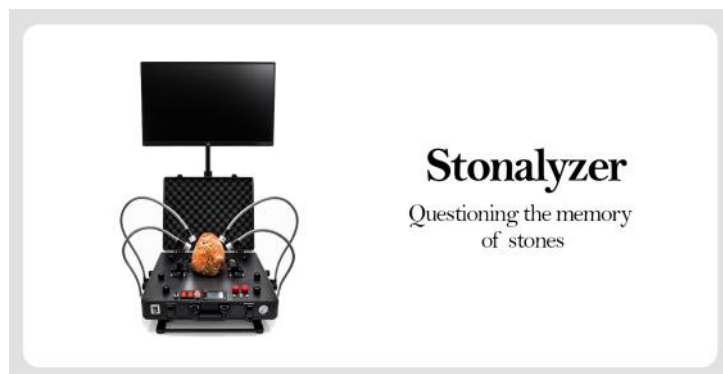
The CODE

Limited Collector Embodiment of 10 - 70x100cm



# DEVELOPED ARTISTIC SYSTEMS

A collection of artistic systems developed through the completion of MSK.





## EXHIBITIONS

MSK's works may be encountered independent of place, appearing unexpectedly at a street corner (*MSK Stones*) or at times in global exhibitions (*Stone Portraits*, *Stonalyzer*).

RÖPORTAJ

# Mehmet Salih Kanber

ZAMANIN İÇİNDEKİ YÜZLER VE TAŞA FISILDAYAN BİR ZİHİN...

BAZEN EN BÜYÜK KEŞİFLER, EN KÜÇÜK SEYERİN İÇİNDE SAKLIDIR. MEHMET SALİH KANBER DE BİZE BUNU YALNIZCA ANLATMIYOR, GÖSTERİYOR... MÜHENDİSLİK DİSİPLİNİNİN KESKİN ÇİZGİLERİ İLE SANATIN SEZGİSEL DERİNLİĞİNİ İÇ İÇE GEÇİREK VE GELİŞTİRDİĞİ "STONOGRAPH" SİSTEMİYLE BİR TAŞIN YÜZEYİNDE ZAMANIN SABRINI, BİR DOKUNUN İÇİNDE DÜNYANIN HAFIZASINI HATIRLAIYOR, BİR ÇAKIL TAŞININ İÇİNE BAKIP ORADA MİLYONLARCA YILIN SABRıyla SAKLANMIŞ YÜZLERİ, HİKAYELERİ, KİMLİKLERİ GÖRÜYOR.

BU SAYIMIZDA, MÜHENDİSLİĞİN RASYONEL DÜNYASINDAN SANATSAL SEZGİNİN UÇSUZ BUCAKSIZ EVRENİNE UZANAN BU BENZERSİZ YOLCULUĞUNU, MEHMET SALİH KANBER'İN KENDİ ANLATIMIYLA DİNLIYORUZ...

RÖPORTAJ: BEGÜM TANERİ

## PRESS

Selected interviews, publications, and curatorial features exploring the practice of MSK.



**Stone Portraits by Mehmet Salih Kanber**

**Making the Unnoticed Beauty Visible: MSK's "Stone Portraits" Go**

Mehmet Salih Kanber (MSK), who strives to embody both engineering and art, creates his work within the tension between an engineer's mind that seeks that same to show down.

Living in Antalya and deeply connected to the city, the engineer-expresses language in each series by balancing technological precision with a series of personal experiences that allowed art to take form. Following a series of personal experiences that allowed art to take form, he defines his creative path with a simple yet profound question: "As time flows by, which beauties in life are you unable to see?"

Through his work, the artist aims to reveal overlooked aesthetic values found in nature, using structural everyday life. His static and poetic series seek to establish a universal visual language that makes sense.


The Stone Portraits series—considered the artist's "first love"—uncovers the hidden aesthetic we rediscovered in tiny sea stones found along the Konyaaltı coast, often unnoticed and stepped on. Unnoticed, these stones are magnified to reveal nature's ancient traces and transform them into complex structures, and artists make form surface compositions reminiscent of abstract paintings, but at a microscopic scale.

Each stone portrait becomes a one-of-a-kind artwork, presented together with the preserved original at location where it was collected. The artist produces one primary piece and ten limited edition per utilization system is used to match the artwork with their certificates of originality, connecting it to the world and introducing a contemporary dimension to art collecting.


MSK regularly collects the stones used in his work from the shores of Antalya, aiming to share the city's landscape through his creations. The Stone Portraits series makes viewers to stop, slow down, observe carefully hidden within the ordinary.

The engineer-artist leaves readers with the same question: "As time flows by, which beauties in life are you unable to see?"


**Contact MSK:**  
**Website:** [www.mehmetSalihKanber.com](http://www.mehmetSalihKanber.com)  
**Email:** [connect@mehmetSalihKanber.com](mailto:connect@mehmetSalihKanber.com)  
**Instagram:** [mehmetSalihKanber](https://www.instagram.com/mehmetSalihKanber)  
**Thank you for your support.**




STRATA REMNANT





FOSIL CRUSTACEA



ANCIENT SCRIPT



SHADOW CONTINENT

TURANT - March 2026

## CONTACT

Available for exhibitions, curatorial collaborations, and collector inquiries.

**Email:** [connect@mehmetsalihkanber.com](mailto:connect@mehmetsalihkanber.com)

**P.C.A.L Whatsapp Line:** [+90 540 515 77 55](https://wa.me/905405157755)

**Website:** [www.mehmetsalihkanber.com](http://www.mehmetsalihkanber.com)

**Social Media (Instagram):** [@mehmetsalihkanber](https://www.instagram.com/mehmetsalihkanber)

