

MSK

CONSTRUCTED
PERCEPTION
ON OVERLOOKED BEAUTIES

V2.12- 20May 2026



ARTWORKS BY MSK
www.mehmetsalihkanber.com

2026

THE QUESTION

The ability to perceive overlooked beauty within life is among the most essential human capacities. Around this inquiry, he constructs systems of perception and develops series of artistic artworks centered on his question:

"As time flows through life, what makes us overlook and which beauties do we miss?"

HIS COMPLEDICTION

Mehmet Salih Kanber (MSK) is an artist operating between two fundamentally opposing disciplines: engineering and art. One builds systems, measures reality, and accelerates processes; other perceives, questions, and slows time down.

Rather than resolving this tension, MSK sustains it through what he defines as his completediction: a state where contradiction is not eliminated, but deliberately preserved and allowed to let his opposing selves complete one another across different moments in time.

Through his inventions such as *Stonograph*, *Stonalyzer*, Fiber Drive System and other experimental systems of perception, MSK investigates overlooked forms of beauty hidden within ordinary materials, forgotten details, and unnoticed moments.

Operating between deep geological time and immediate human experience, his works invite viewers to pause and reconsider what remains unseen within everyday life.

EDUCATION - BACKGROUND

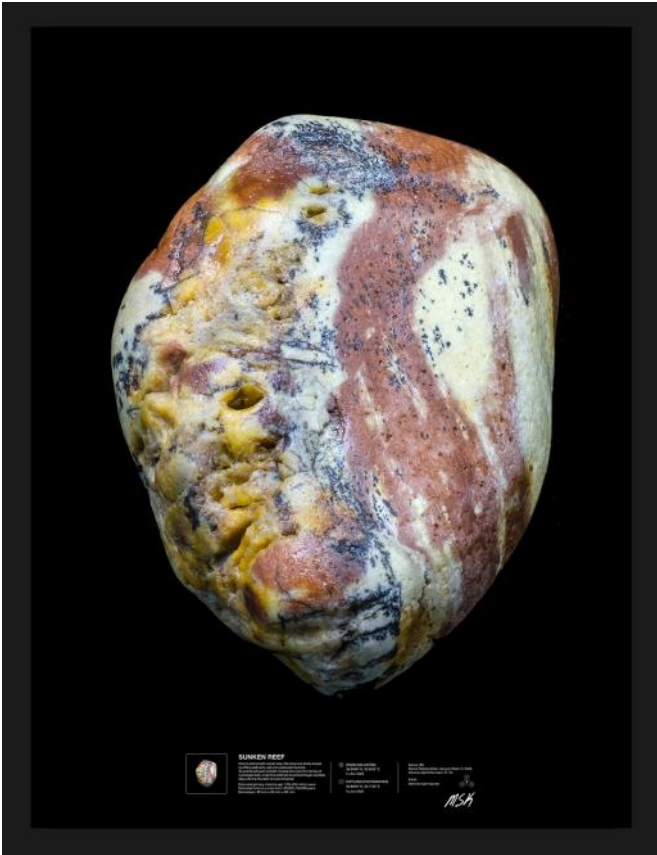
Mehmet Salih Kanber (MSK) holds a degree in Electrical and Electronics Engineering from Middle East Technical University (METU) and a Master's degree from Akdeniz University.

Alongside his artistic practice, he develops functional, and modular products disrupting commercial production and retail chains. With a background spanning energy systems, automation, and robotics, his practice bridges engineering precision with artistic exploration.

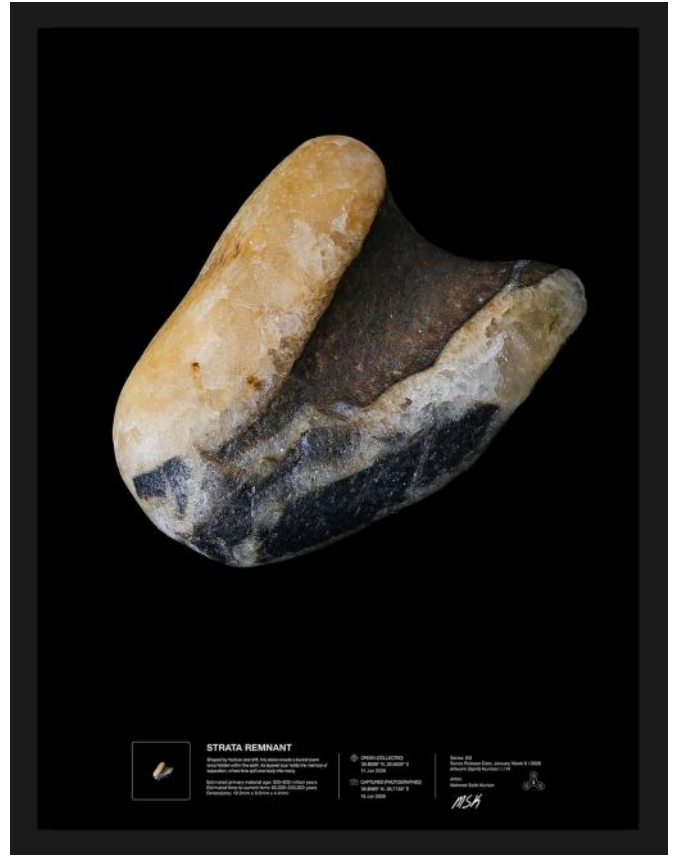


STONE PORTRAITS SERIES

Translating Micro-Lithic Beauty of Nature into Macro-Scale Limited Artworks



Master Artwork - Embodied in Portrait Form, 70×100 cm



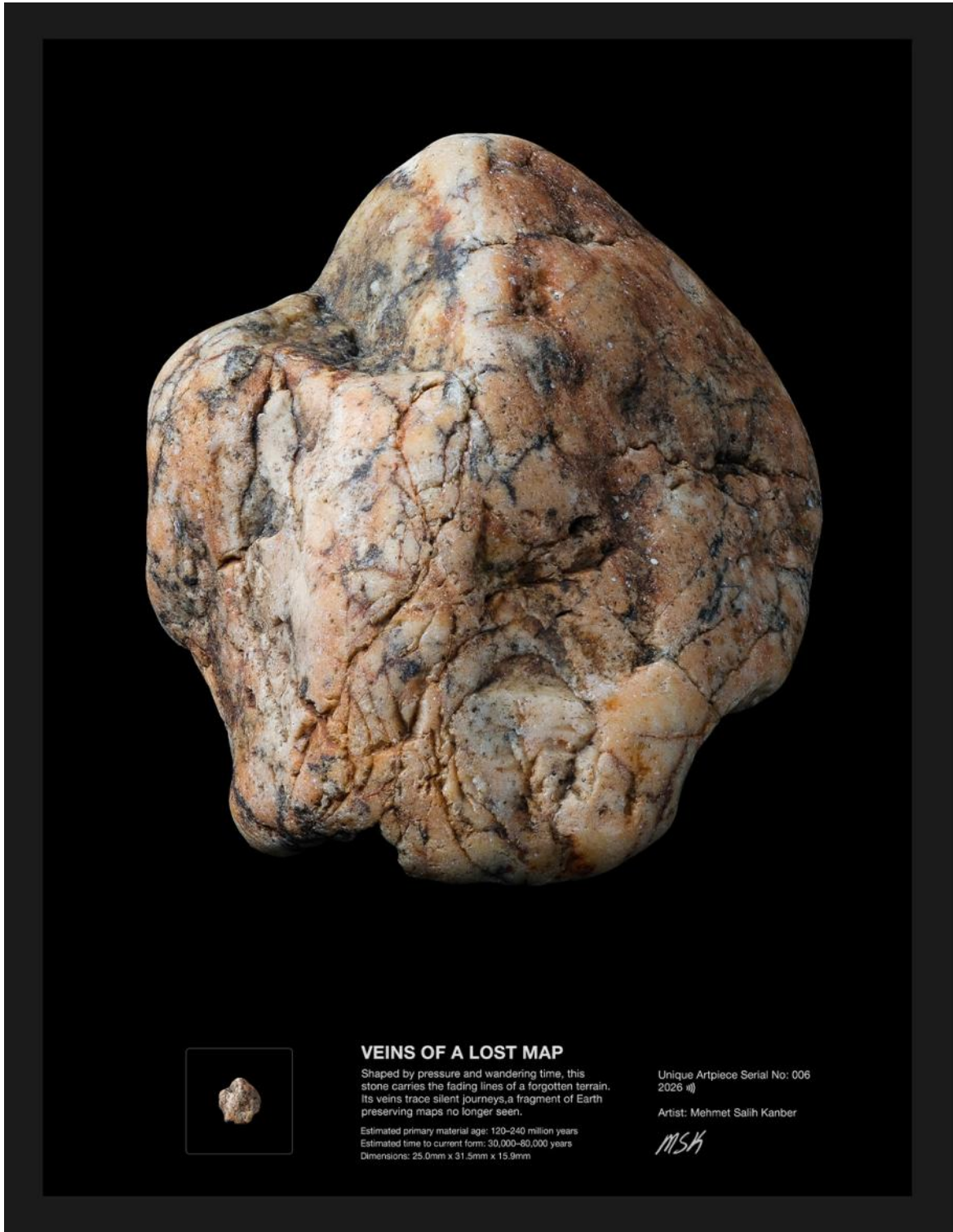
Master Artwork - Embodied in Portrait Form, 50×70 cm



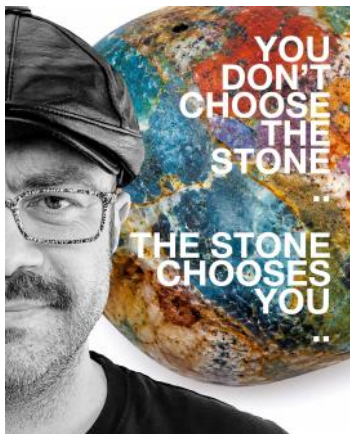
Master Artwork - Embodied in Portrait Form, 30×40 cm



Master Artwork - Embodied in Portrait Form, 30×40 cm



Master Artwork - Embodied in Portrait Form, 50x70 cm



You Don't Choose the Stone.. The Stone Chooses You..

The sea stones that MSK transforms into limited series of artworks under the name Stone Portraits remind us of the overlooked beauty we often fail to notice in life. Each Stone Portraits stone possesses its own unique character, energy, and memory, resonating with people who carry a similar energy, character, and memory within themselves.



MSK gathers a limited number of tiny sea stones, each carrying millions of years of memory, and through his Stonograph's precise positioning and lighting capabilities, infused with his artistic vision, he transforms those tiny beauties of nature into *Stone Portraits*.

In this act, he bridges deep time with the present, reinterpreting ancient memory within a contemporary form.

Within these works, viewers encounter their own emotions and hidden memories, sometimes forming an immediate, unspoken connection. *Stone Portraits* invite a quiet pause, asking:

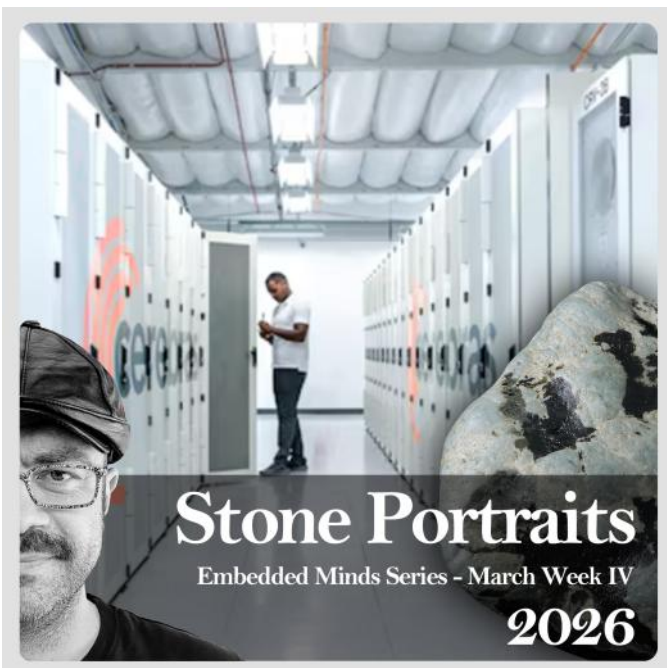
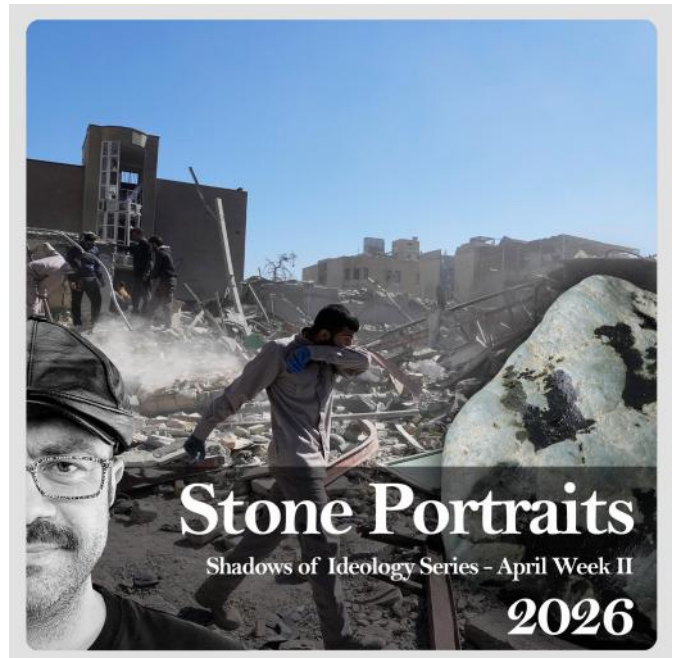
"What beauties in life are we overlooking?"



RELEASE STRUCTURE

Stone Portraits are released in weekly series.

Each series of *Stone Portraits* consists of a limited number of stones, named after a significant event of the week in which the series is formed, creating a bridge between deep time and the present.





THE EMBODIMENT RITUAL

MSK prepares the spirit. The collector completes its embodiment, choosing its mode of appearance, Portrait or Detail, and determining its scale. Through this ritual, the work is not only realized, but completed through the convergence of two roles: the artist and the collector.

From a singular spirit, only **one Master Artwork** and **five Collector Prints** come into existence through museum-grade fine art pigment printing.

No more can be created.

The Master Artwork incorporates the original stone itself, preserved on a custom base, singular and irreproducible.

ity
Mehmet Salih Kanber



m Custom

21-02-2026
Date

ained herein

Each piece is embodied only once, in the form and scale chosen by its collector.

Once embodied, the pieces remain fixed in their form, preserved, certified, and irreproducible.



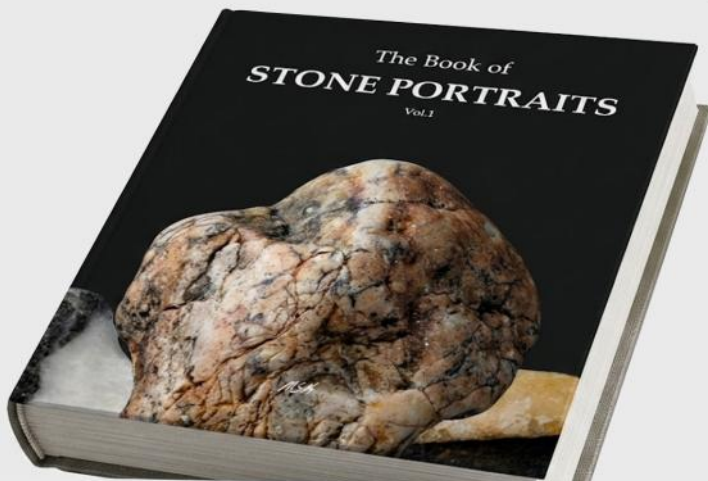
LITHIC PAREIDOLISM

MSK defines Lithic Pareidolism, revealing hidden faces and shapes within sea stones shaped by millions of years of natural forces.

These interpretations can be explored in *the Book of Stone Portraits* and through the accompanying interpretation videos on his social media.

The Book of Stone Portraits

A bridge between deep time
and the present



THE BOOK OF STONE PORTRAITS

The Book of Stone Portraits brings together the series of stone works alongside the events that give them their names, and the interpretations that emerge from their surfaces. Rather than fixing meaning, the book presents a field of interpretations, where each stone is encountered through the act of seeing.



BEAUTY INSIDE

MSKPERIMENTS

Experimental Artworks to reveal beauty and what stands in the way of seeing it.

These experimental works extend the central question by uncovering hidden and unexpected beauties while simultaneously exposing the mechanisms of overlooking, distraction, haste, routine, and limited attention that shape what we fail to see as time flows through life.

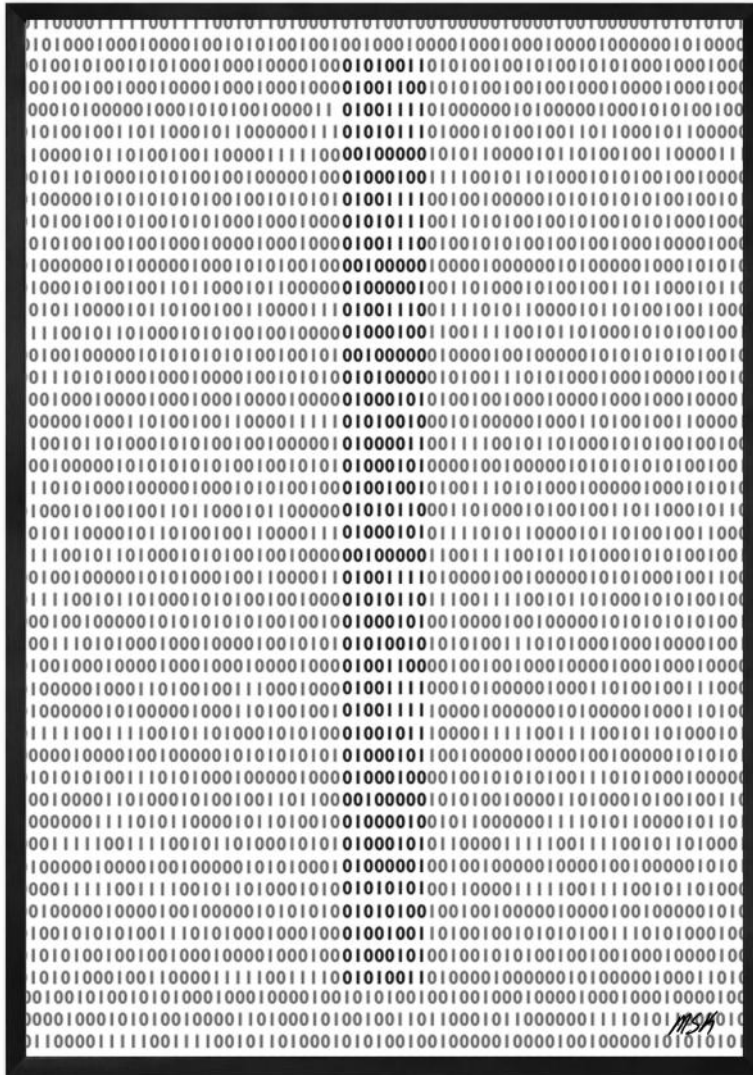
Over time, some of these MSKperiments evolve into fully realized series, becoming ready to be exhibited and to meet collectors.



NORMED



THE STONALYZER



THE MESSAGE

CODE in CODES

Limited Collector Embodiment of 10 - 70x100cm

THE MESSAGE SERIES

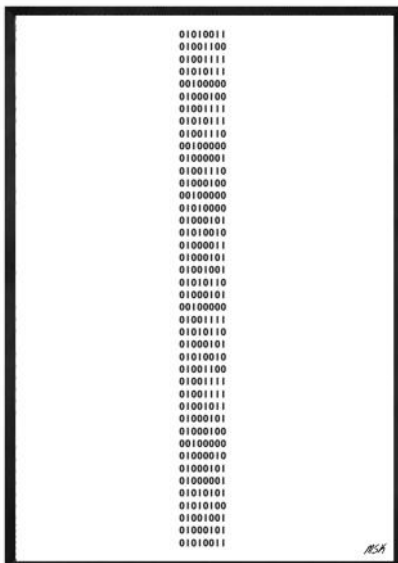
As we endlessly move through the codes of life, can we slow down for a moment long enough to notice the one quietly telling us:

“Slow down and perceive overlooked beauties.”?

The Message series represents an experimental line of inquiry that gradually transformed into a body of Works, which will include kinetic structures, ready to be exhibited and encountered by collectors.

For the Works of “The Code” and “Code in Codes” only **five Collector Prints** come into existence through museum-grade fine art pigment printing. **No more can be created.** Each piece is embodied only once, in the form and scale chosen by its collector.

Once embodied, the pieces remain fixed in their form, preserved, certified, and irreproducible.



THE MESSAGE

The CODE

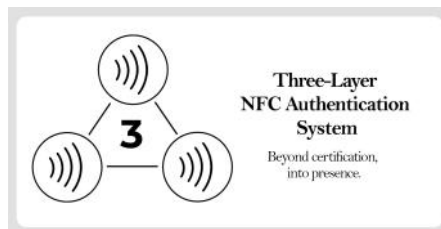
Limited Collector Embodiment of 10 - 70x100cm

DEVELOPED ARTISTIC SYSTEMS

A collection of artistic and technological systems developed by MSK.



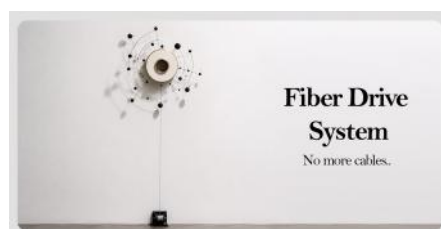
A self-developed imaging and perception system designed to reveal hidden visual forms within small sea stones through controlled light, scale, angle, and shadow.



A three-point authentication structure connecting the artwork, the original stone, and the certificate through embedded NFC layers, transforming authentication into part of the artwork itself.



An experimental art-machine imagined as a device capable of reading the memory of stones, questioning whether matter carries traces of time, violence, transformation, and beauty.



The Fiber Drive System for kinetic artworks to avoid the visual interruption created by conventional cables. The system enables motion and energy transfer allowing the perceptual continuity of the artwork to remain uninterrupted.



EXHIBITIONS

MSK's works may be encountered independent of place, appearing unexpectedly at a street corner (*MSK Stones*) or at times in global exhibitions (*Stone Portraits*, *Stonalyzer*).

RÖPORTAJ

Mehmet Salih Kanber

ZAMANIN İÇİNDEKİ YÜZLER VE TAŞA FISILDAYAN BİR ZİHİN...

BAZEN EN BÜYÜK KEŞİFLER, EN KÜÇÜK SEYERİN İÇİNDE SAKLIDIR. MEHMET SALİH KANBER DE BİZE BUNU YALNIZCA ANLATMIYOR, GÖSTERİYOR... MÜHENDİSLİK DİSİPLİNİNİN KESKİN ÇİZGİLERİ İLE SANATIN SEZGİSEL DERİNLİĞİNİ İÇ İÇE GEÇİREK VE GELİŞTİRDİĞİ "STONOGRAPH" SİSTEMİYLE BİR TAŞIN YÜZEYİNDE ZAMANIN SABRINI, BİR DOKUNUN İÇİNDE DÜNYANIN HAFIZASINI HATIRLAIYOR, BİR ÇAKIL TAŞININ İÇİNE BAKIP ORADA MİLYONLARCA YILIN SABRıyla SAKLANMIŞ YÜZLERİ, HİKAYELERİ, KİMLİKLERİ GÖRÜYOR.

BU SAYIMIZDA, MÜHENDİSLİĞİN RASYONEL DÜNYASINDAN SANATSAL SEZGİNİN UÇSUZ BUCAKSIZ EVRENİNE UZANAN BU BENZERSİZ YOLCULUĞUNU, MEHMET SALİH KANBER'İN KENDİ ANLATIMIYLA DİNLIYORUZ...

RÖPORTAJ: BEGÜM TANERİ

PRESS

Selected interviews, publications, and curatorial features exploring the practice of MSK.



Stone Portraits by Mehmet Salih Kanber

Making the Unnoticed Beauty Visible: MSK's "Stone Portraits" See

Mehmet Salih Kanber (MSK), who strives to embody both engineering and art, creates his work within the tension between an engineer's mind that seeks that same to show down.

Living in Antalya and deeply connected to the city, the engineer-artist expresses language in each series by balancing technological precision with a series of personal experiences that allowed art to take form. He asks a simple yet profound question: "As time flows by, which beauties in life are we unable to see?"


Through his work, the artist aims to reveal overlooked aesthetic values found in nature, using stones that carry the weight of time. His static and poetic series seek to establish a universal visual language that makes sense of the world.

The Stone Portraits series—considered the artist's "first love"—uncovers the hidden aesthetic beauty embedded in tiny sea stones found along the Konya coast, often unnoticed and stepped on. Unnoticed, these stones are magnified to reveal nature's ancient traces and transform them into complex, abstract forms. The artist uses a combination of traditional and modern techniques, including 3D printing, to create a contemporary dimension to art collecting.


MSK regularly collects the stones used in his work from the shores of Antalya, aiming to share the city's natural beauty through his creations. The Stone Portraits series makes viewers to stop, slow down, observe, and appreciate the beauty of the world.

The engineer-artist leaves readers with the same question: "As time flows by, which beauties in life are we unable to see?"


Contact MSK:
 Website: www.mehmetalihkanber.com
 Email: connect@mehmetalihkanber.com
 Instagram: [mehmetalihkanber](https://www.instagram.com/mehmetalihkanber)
 Thank you for your support.




STRATA REMNANT




FOSIL CRUSTACEANS



ANCIENT SCRIPT



SHADOW CONTINENT



TURANT - March 2026

CONTACT

Available for exhibitions, curatorial collaborations, and collector inquiries.

Email: connect@mehmetsalihkanber.com

Join the P.C.A.L Email List: <https://mehmetsalihkanber.com/#emaillist>

P.C.A.L Whatsapp Line: [+90 540 515 77 55](https://wa.me/905405157755)

Website: www.mehmetsalihkanber.com

Social Media (Instagram): [@mehmetsalihkanber](https://www.instagram.com/mehmetsalihkanber)

